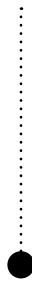


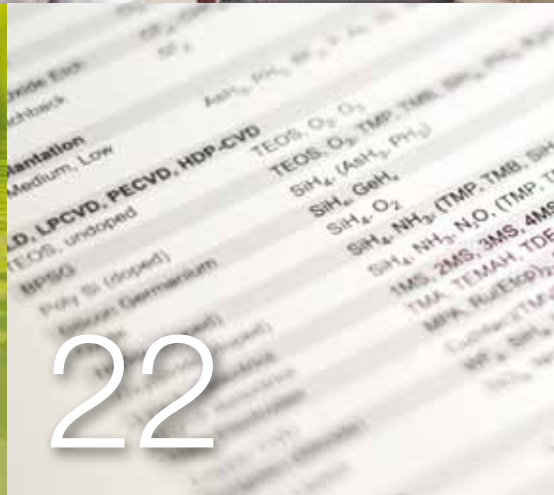


CS CLEAN  
SOLUTIONS



# EXHAUST GAS TREATMENT PRODUCTS

Discover the Advantages



# DISCOVER THE ADVANTAGES

04  
**Discover the Advantages**  
Of 30 years dedication to waste gas abatement

06  
**CS CLEAN SOLUTIONS**  
**Product Overview**  
Waste gas removal right where you need it

08  
**CLEANSORB Technology**  
Developed in our laboratory to enable your process

10  
**Safe Environmentally-Friendly Technology**  
The reassurance of passive, dry bed technology

CLEANSORB Columns  
A cornerstone of our unique service concept

12  
**Customer Service**  
Support when and where you need it

14  
**CLEANSORB®**  
**Dry Bed Absorber Models**  
CLEANSORB® LABLINE  
For R&D-scale work

CLEANSORB® BASELINE  
Safe, clean exhaust abatement starts here

CLEANSORB® FABLINE  
The standard for pilot line and factory production

CLEANSORB® PRIMELINE  
Fully featured for critical, high-end applications



16  
**CLEANSORB PRIMELINE**  
Fully featured for critical, high-end applications

18  
**CLEAN-PROTECT**  
Safeguard against emergency gas release

**CLEANVENT CARTRIDGE**  
For gas cabinet vent lines

20  
**Scale-Up**  
**Engineering Solutions**  
Customized Large Scale Applications

22  
**Application List**  
Thin-film deposition, etching, photovoltaics, ...

24  
**YOUR PARTNER**  
For sustainable manufacturing

26  
**Contact us**  
Our worldwide sales and service network





# DISCOVER

## DISCOVER THE ADVANTAGES

As an internationally operating company with a global network of service centers, CS CLEAN SOLUTIONS been serving customers in the semiconductor and related high tech industries since 1986.

Based on our proprietary dry bed absorption technology, our products have earned an unparalleled track record for safety, process reliability and environmentally-sustainable manufacturing.

Whether your work relates to semiconductors, photovoltaics, pharmaceuticals or chemicals, on an R&D or manufacturing scale, if your application requires removal of downstream reactive gases please contact us and discover the advantages of CS CLEAN SOLUTIONS unique technology and worldwide support!



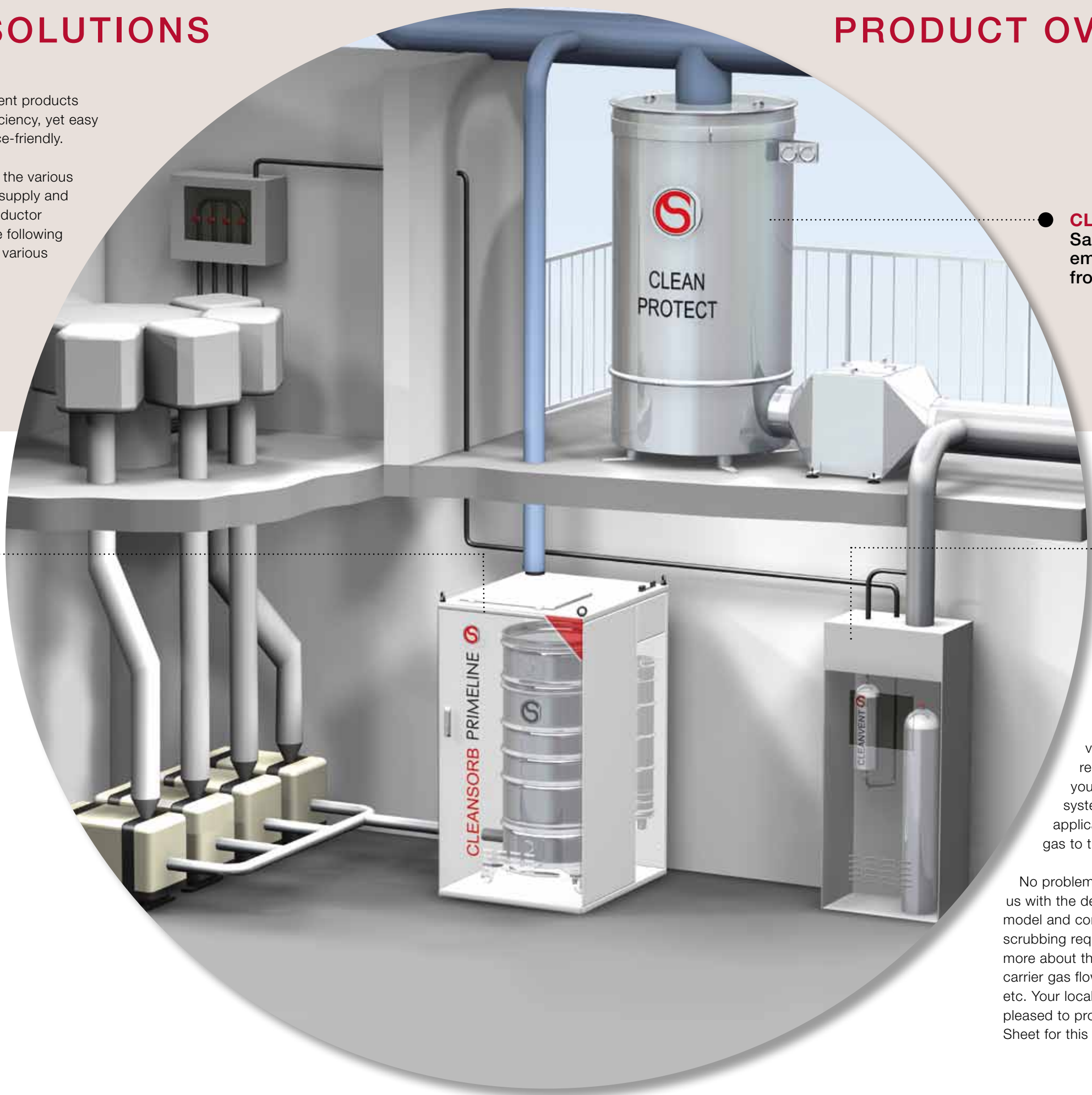


# CS CLEAN SOLUTIONS

CS CLEAN SOLUTIONS gas abatement products are unmatched in their scrubbing efficiency, yet easy to operate and extremely maintenance-friendly.

The schematic shows an overview of the various product lines as installed on the gas supply and process exhaust of a typical semiconductor wafer manufacturing fab. Refer to the following pages for a further description of the various product lines.

# PRODUCT OVERVIEW



**CLEANSORB®**  
Dry bed  
removal  
of waste gas  
from process  
tool exhaust

**CLEAN-PROTECT**  
Safeguard against  
emergency gas release  
from supply cabinets

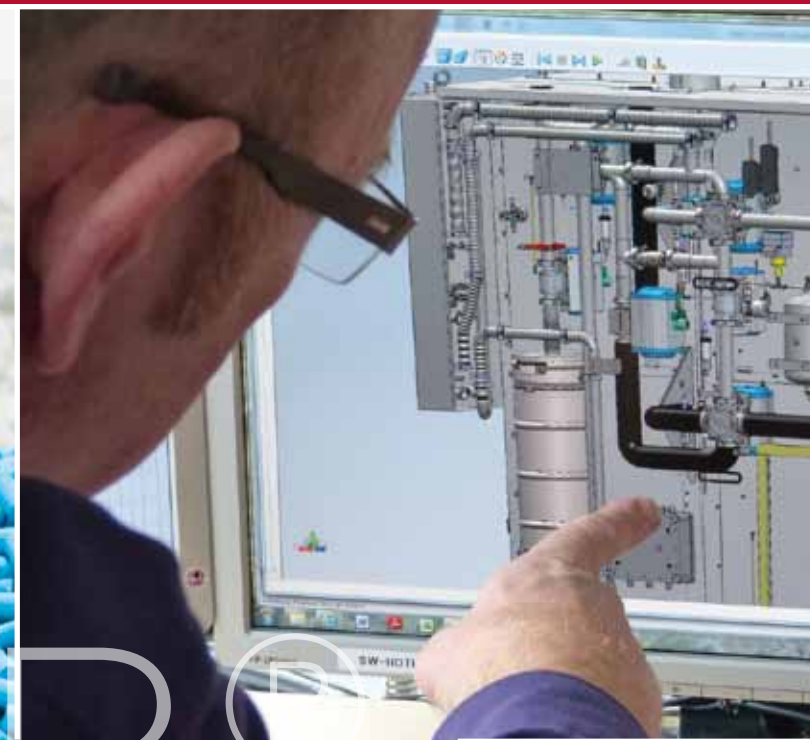
**CLEANVENT**  
Mini absorber  
cartridge for gas  
cabinet vent lines

### We need your input!

Perhaps your machine has a small volume of concentrated gas which requires periodic venting. Or, maybe you already have a CLEANSORB system installed on a plasma etch application and intend to add a further gas to the etch recipe.

No problem: simply contact us and provide us with the details! To specify a CLEANSORB model and configuration best suited to your scrubbing requirements, we need to understand more about the type of gases to be removed, carrier gas flow, inert gas contribution of pumps, etc. Your local sales and service partner will be pleased to provide you with a Process Definition Sheet for this purpose.





# CLEANSORB®

## CLEANSORB® TECHNOLOGY

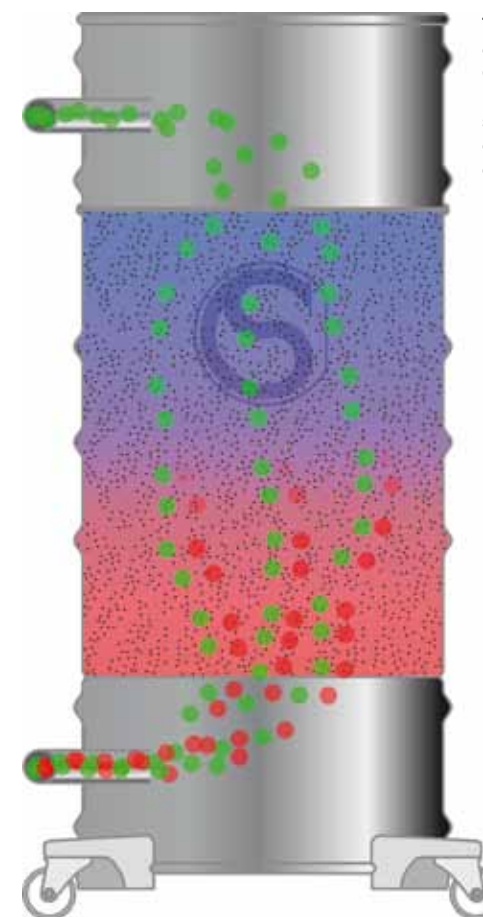
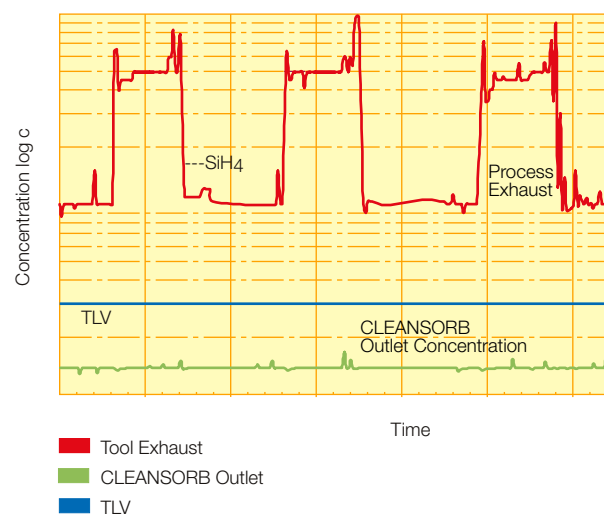
CLEANSORB dry chemisorber media removes hazardous process gases by chemical conversion to stable solids at ambient temperature. It is the enabling technology for the CS CLEAN SOLUTIONS line of dry scrubbing products. No external heating, moisturization, or other facilities are required for operation. Hence the CLEANSORB system is fully passive, and is permanently on stand-by, even in the event of a power outage or other facilities failure.

Where scrubbing performance is expressed in terms of “percent waste gas removal”, the non-retained percentage of gas is often enough to cause considerable corrosion or blockage of downstream ducting and equipment.

CS CLEAN SOLUTIONS specifies retention efficiency of its dry bed columns as absolute ppm concentrations. Gas concentration at the CLEANSORB column’s outlet typically lies below the detection level of commonly used gas detectors- right up until the end of absorber capacity lifetime.

CS CLEAN SOLUTIONS has a dedicated team of R&D chemists focussed on developing its range of CLEANSORB granulates.

Our chemisorber materials are developed “from scratch” in our laboratory and scaled up to the bulk manufacturing level. Ongoing review and testing ensures that our media keeps pace with the latest manufacturing technologies and process chemistries.



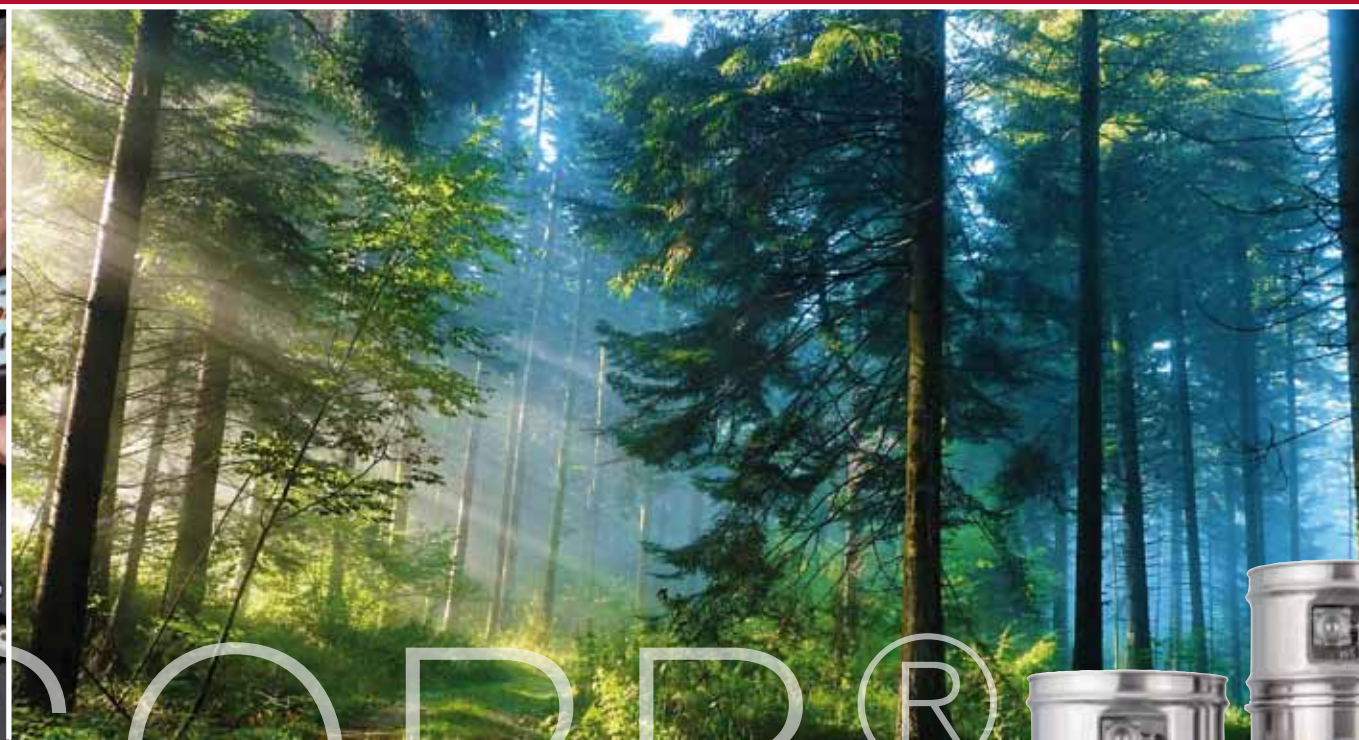
The retention efficiency of CLEANSORB dry bed columns is specified in terms of absolute ppm concentrations.



### Benefits

- ▶ Safe, non-combustible inorganic medium (no charcoal)
- ▶ Highest capacities
- ▶ Unique customised material compositions
- ▶ No consumption of electricity, city water, oxygen, nitrogen
- ▶ No secondary emissions to the environment
- ▶ Excellent Cost-of-Ownership
- ▶ Irreversible conversion of hazardous gases to stable inorganic solids at ambient temperature





# CLEANSORB®

## CLEAN, SAFE, EXHAUST GAS ABATEMENT

Many of the specialty process gases used in semi-conductor wafer manufacturing and related high-tech industries are either pyrophoric, toxic, or corrosive. Unused process gases and their hazardous by-products must be efficiently and safely removed from exhaust lines to ensure safety of personnel, compliance with regulatory emission standards, and process uptime.

Increasing levels of device integration and shrinking critical dimensions require new materials for the deposition of inter-level metal connectors, barrier-, and dielectric layers. Increasingly, these are complex metalorganic molecules supplied from liquid sources. Over the years, CS CLEAN SOLUTIONS has gained extensive experience in the abatement of MO precursors through its exposure to compound semiconductor and ALD applications. Point-of-use CLEANSORB models are available to meet the needs of all our customers, from small-scale university researchers to round-the-clock fabrication.

### Benefits

- ▶ No consumption of water resources
- ▶ No generation of waste water
- ▶ No secondary emissions
- ▶ Room temperature operation
- ▶ No pressure drop over column lifetime
- ▶ Safety bypass
- ▶ Outlet concentrations can be monitored as absolute, TLV- level concentrations
- ▶ Passive operating principle
- ▶ Applicable to a wide range of hazardous gases

## CLEANSORB® COLUMNS

The CLEANSORB absorber column has been specially designed with handling and refilling logistics in mind. The dry scrubbing columns are approved as container vessels for road transport of the spent absorber material in accordance with applicable ADR/ DOT regulations. CLEANSORB columns are not discarded after use, but refilled with fresh absorbent.

The columns are manufactured from high quality 316L stainless steel to ensure long working life, even on harsh process applications such as Metal Etching or Tungsten CVD. The inlet and outlet connections to the patented CLEANSORB absorber column are made via its own integrated valves. Before taking a column off-line, the valves are shut off to isolate the absorber bed and any process deposits - ensuring maximum safety and ease of handling for the operator.



The CLEANSORB column can accommodate high flowrates – as typical when multiple process chambers need to be hooked up. Even at high flows, pressure drop across the column is usually negligible. The sub-pressure operation as well as the dry working atmosphere greatly reduces formation of solids, leading to greatly improved process uptime.

### Benefits

- ▶ Reusable
- ▶ UN-approved for transportation
- ▶ Local disposal service worldwide
- ▶ Maximum operational safety
- ▶ No exposure to chemicals
- ▶ Hermetically sealed modules





# WORLDWIDE

## CUSTOMER SERVICE

Even when working in high volume production, the maintenance-friendly CLEANSORB dry bed absorber rarely requires intervention from factory service technicians. There are no moving parts or heated components which require frequent attention, or scrubber parts which require regular cleaning. Most typically, service work is limited to change-out of the column, periodic calibration of the endpoint (gas) sensor, and annual preventive replacement of inlet steel bellows and O-rings.

CLEANSORB customers enjoy a comprehensive maintenance package comprising a unique take-back and disposal service for the spent absorber media. After removal from the CLEANSORB cabinet, the column is ready for shipment to the nearest CS CLEAN SOLUTIONS Refill and Service Center. There, the expended absorber granulates are collected and sorted in accordance with applicable local regulations for their classification and disposal. Where possible, the spent materials are re-processed for recovery of metals, or for other industrial uses.

Before being recharged with fresh CLEANSORB granulate, the emptied columns are washed, thoroughly cleaned and dried. All sealing gaskets are replaced. The refilled columns are subjected to a strict quality control check-out procedure which includes helium leak-testing and packaging compatible with the customer's grey area.

Consult your local CS CLEAN SOLUTIONS partner for annual preventive maintenance contracts or waste gas analysis measurements.

### Benefits

- ▶ Process application support
- ▶ Start-up support
- ▶ Installation support
- ▶ Service and maintenance
- ▶ Refill services

## CUSTOMER







## CLEANSORB® DRY BED ABSORBER MODELS

### CLEANSORB® BASELINE

As its name suggests, the BASELINE system offers an essential level of the components and functionality provided by the other models of the CLEANSORB product range. It is often the model of choice for research institutes or in pilot line or low-volume manufacturing.

### CLEANSORB® LABLINE

The CLEANSORB LABLINE features a small absorber column in a compact, air-extracted cabinet.

The wide selectivity of CLEANSORB chemisorber media to a diverse list of gases and liquid precursors, ranging from corrosive or toxic species to latest-generation metalorganic complexes, offers ideal flexibility for R&D requirements.

A particular advantage for sporadic laboratory work is the passive operating principle. The LABLINE is always ready and does not have to be switched on, heated up or otherwise activated each time a new experiment is to be run.



### CLEANSORB® PRIMELINE

The PRIMELINE series, comprising the PS and PD model platforms, is described on the following pages.

### CLEANSORB® FABLINE

FABLINE is the standard CLEANSORB model for waste gas removal on factory-scale applications. Available in three column sizes, the system is readily adaptable to the requirements of both pilotline and full-scale manufacturing. Drawing on 30 years experience and several thousand installations worldwide, the CLEANSORB product line has established an enviable reputation for solid engineering and reliability – even under

the most demanding of process conditions. The FABLINE is constructed from corrosion-resistant 316L stainless steel and high quality, trustworthy components. Enabled by the built-in safety and efficiency of CS CLEAN SOLUTIONS proprietary CLEANSORB® chemisorber media, FABLINE is the model of choice for a wide range of process applications including: Plasma Etching, CVD, ALD, Ion Implantation and CIGS Photovoltaics.





## CLEANSORB® PRIMELINE PS AND PD

The PRIMELINE series represents the fully-featured safety version of the CLEANSORB family. In the event of a loss of facilities, the system will

Every single hour of process time lost to exhaust and scrubber maintenance can add thousands of dollars to product manufacturing costs. The CLEANSORB PRIMELINE series brings unsurpassed cost-of-ownership to high volume manufacturing.

On most installations, operator intervention is only required every few months. A key enabler for uptime is the minimized time required for column change. The smaller-footprint CLEANSORB PS model features a back-up column, allowing production to be run to completion even after the capacity of the main absorber column has become depleted. The larger CLEANSORB PD model incorporates two full-size absorber columns plus a back-up column; one column can remain active absorbing exhaust gas with full SEMI S2-compliant safety protection, while the second column is independently purged before removal from the cabinet for refilling.



PRIMELINE PS

revert to a safe state with redundant absorption capability. The system is specially engineered to handle safety-critical applications such as Metal Organic Chemical Vapor Deposition.



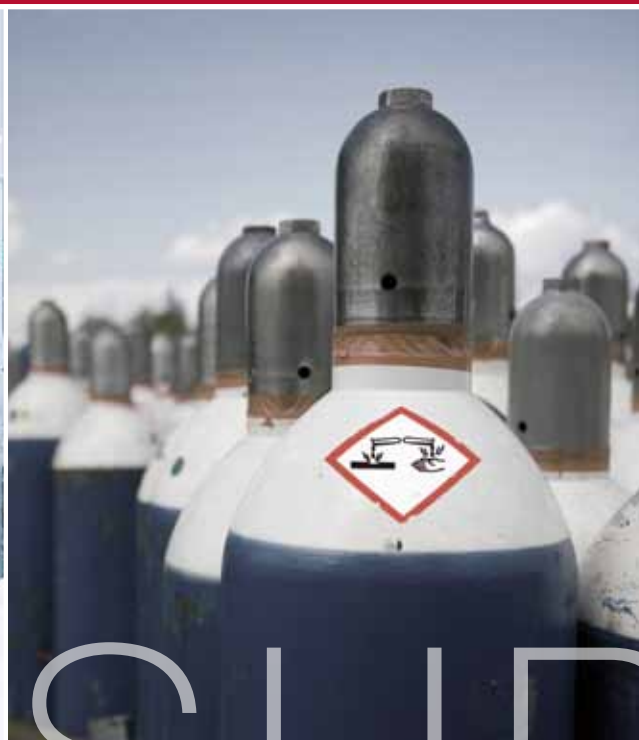
PRIMELINE PD



When configured for hydride gas processes such as MOCVD, unique control functions include an infra-red array for contactless temperature monitoring of the absorber columns, as well as an inert gas cooling mechanism. A dedicated class of CLEANSORB chemisorber media ensures highly effective, temperature-managed removal of toxics such as arsine or phosphine.

In both models, the individual columns are independently monitored for gas breakthrough. Automated routines for in-situ leak-testing and inert gas purging enhance safety and ease of operation. Further attributes of the PRIMELINE PD model are its touch screen, event and data logging, independent safety PLC, and SIL-certified components.





# GAS SUPPLY

## CLEAN-PROTECT

**Safeguard against emergency gas escape.** Uncontrolled release from gas cylinders poses a serious threat to environment and safety, owing to the high quantity of pressurized gas usually present in concentrated form. Gas leakages are known to have occurred: during storage of fresh cylinders; due to improper connection of fittings in gas cabinets; component failure, e.g. rupture of pressure regulator diaphragm; during storage of empty cylinders.

The purpose of the CLEAN-PROTECT is to absorb toxic or otherwise hazardous gases during a gas release incident. Escaping gases undergo an irreversible chemical reaction (oxidation or neutralization) within the CLEAN-PROTECT absorber bed, where they are safely converted into solid by-products. The system is installed in line with downstream air extract ducting and does not require power or other facilities to operate, meaning that it is permanently on 24/7 stand-by.

The unit is applicable to a wide range of hazardous gases, including: AsH<sub>3</sub>, BF<sub>3</sub>, Br<sub>2</sub>, Cl<sub>2</sub>, ClF<sub>3</sub>, COCl<sub>2</sub>, F<sub>2</sub>, HCl, HF, HBr, H<sub>2</sub>S, H<sub>2</sub>Se, HCN, NH<sub>3</sub>, N<sub>2</sub>H<sub>4</sub>, PH<sub>3</sub>, SO<sub>2</sub>.  
If no gas release incident occurs, the change-out frequency of the absorber bed is five years.

### Benefits

- ▶ High flow rates. Up to 3600m<sup>3</sup>/h
- ▶ Absorption of toxic gas cylinder release
- ▶ Low pressure drop
- ▶ Permanently online
- ▶ Suitable for multi-cabinet installations
- ▶ Passive operating principle
- ▶ Applicable to a wide range of hazardous Gases



## CLEANVENT

**Mini Cartridge for Gas Cabinet Vent Lines**  
Before a new gas cylinder is put on-line within a gas supply cabinet, process gas remaining from the previous cylinder must first be removed – both for reasons of safety and to ensure integrity of the gas supply. The dead volume of residual gas is likely to be highly concentrated, toxic, pyrophoric, or corrosive.

For almost 30 years the CLEANVENT cartridge has proven itself a safe solution for the removal of hazardous purge gases. Installed within the gas cabinet on the suction side of the venturi vacuum generator, or in a valve manifold box, the CLEANVENT cartridge allows residual gases to be scrubbed “at-source”.

Refillable CLEANVENT cartridge types are available for a broad range of specialty gases and are supported by our worldwide network of service partners.

### Benefits

- ▶ At-source removal of purge gases
- ▶ Gas cabinet installation
- ▶ Applicable to a wide range of hazardous gases

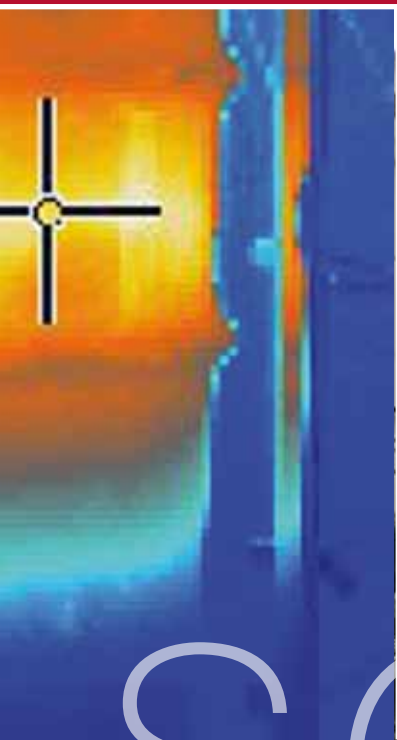


### CLEANVENT CV10ST Thermal Dry Bed Absorber for NF<sub>3</sub> Removal

Designed for the removal of purge gases which are chemically stable at room temperature, the CLEANVENT CV10ST features a heated cartridge with control and monitoring elements in an air-extracted cabinet. The CV10ST is most commonly used for the removal of nitrogen trifluoride – a chemically stable gas used in the plasma cleaning of CVD chambers in semiconductor and photovoltaic manufacturing. Despite its stability, NF<sub>3</sub> is a greenhouse gas with a high global warming potential.

The CV10ST is installed downstream of the gas supply cabinet or bulk gas supply manifold.





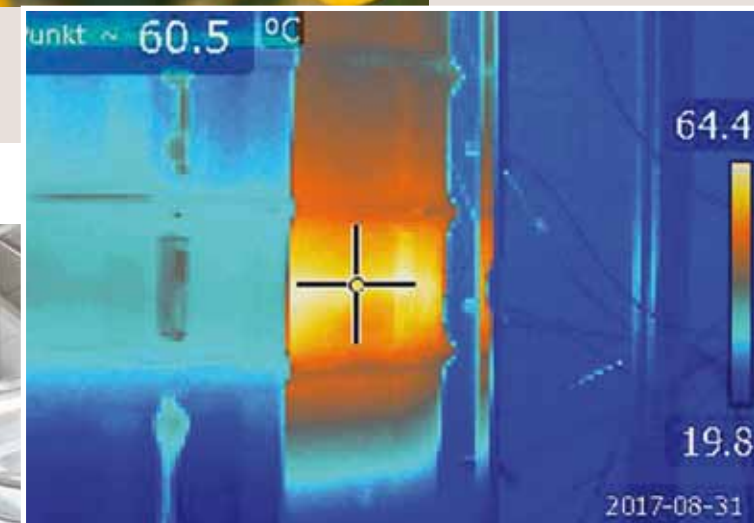
# SCALED-UP

## SCALED-UP ENGINEERING SOLUTIONS

In certain cases, CLEANSORB dry bed chemisorption technology can be scaled up to benefit return-on-investment for waste gas treatment in high volume manufacturing. The pictures on this page show a moving bed reactor in an “end-of-pipe” configuration to handle the combined effluent of several process exhausts. CLEANSORB dry media is dosed to match the incoming flow of waste gas. Previously, this process had been abated using wet scrubbing technology which produced 15 kg of contaminated waste water/sludge per cubic meter of treated waste gas. For the corresponding amount of effluent gas, the reaction by-product from the environmentally-friendly CLEANSORB system is 2.5 kg of stable, odorless granulate. Disposal of the consumed material is handled by CS CLEAN SOLUTIONS local service partner.

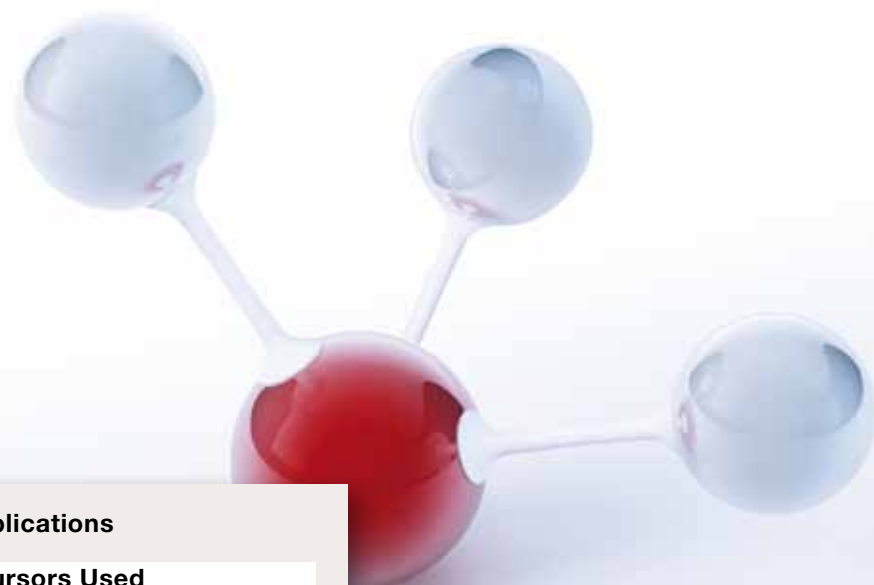
### Customized Design and Manufacture

To establish the feasibility of using dry bed scrubbing technology on the particular application, the process can first be simulated on a small scale within our gas testing laboratory. Next, CS CLEAN SOLUTIONS engineering staff work closely with the customer to define the design requirements. Fluid flow simulation and computer modeling are useful tools in the early conceptualization and design phases. The machine is constructed in a dedicated area of our factory to meet the highest standards of engineering, reliability and safety. Following the Factory Acceptance Test, the system is disassembled for shipping to the customer site. There, it is reassembled and integrated into the customer’s process infrastructure. Our engineers remain on site until commissioning, hand-over of documentation, training and Final Acceptance have been completed. Signal interfaces allow remote monitoring and diagnostics by our product specialists, while the customer can avail of 24/7 troubleshooting and service support.





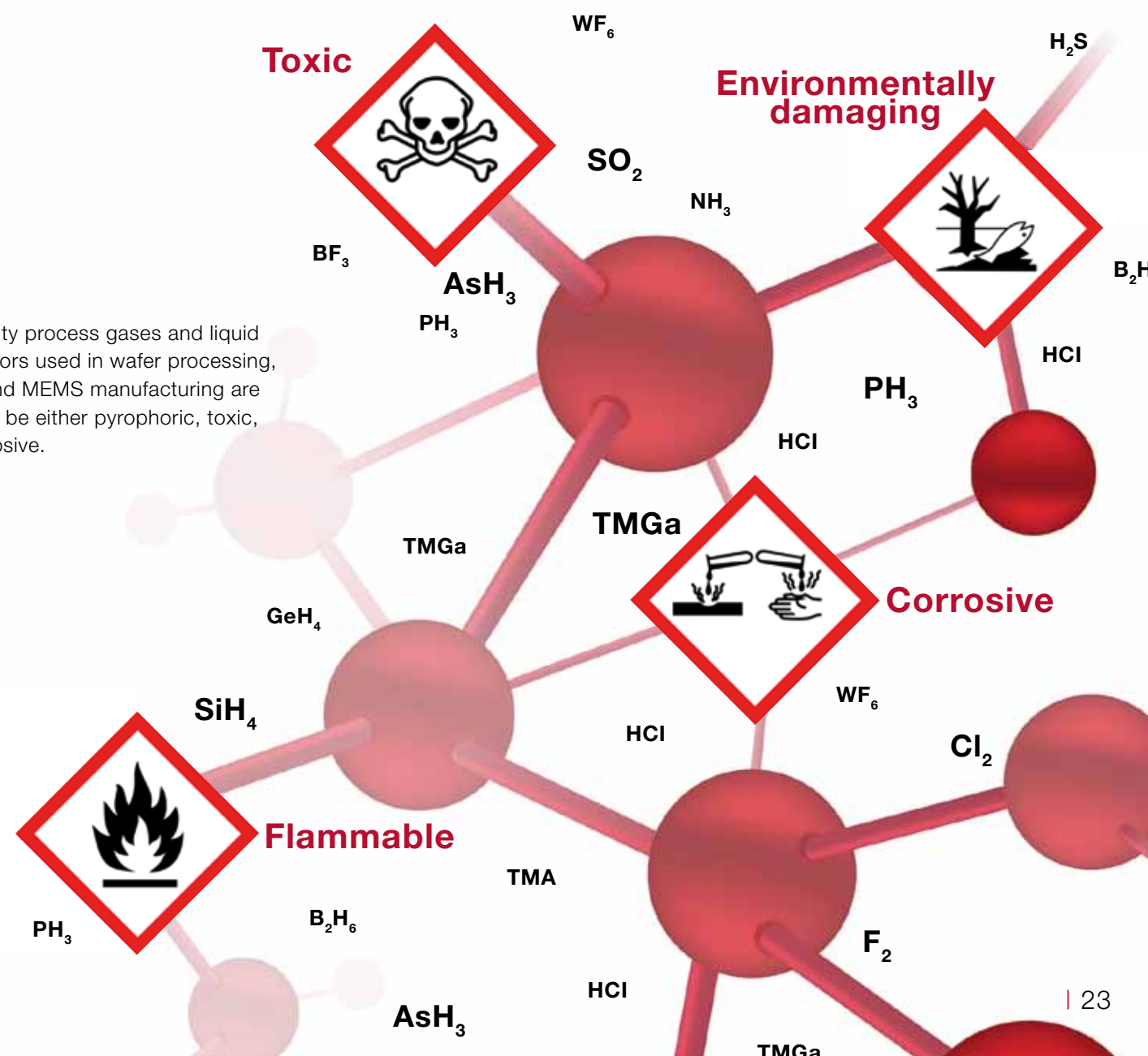
# APPLICATION LIST



## CS CLEAN SOLUTIONS Abatement for a Wide Range of Applications

Process Application	Typical Gases or Liquid Precursors Used
<b>Plasma Etch</b>	
Metal Etch	Cl <sub>2</sub> , BCl <sub>3</sub> , HCl, CF <sub>4</sub> , SF <sub>6</sub>
Poly Silicon Etch	Cl <sub>2</sub> , HBr, Br <sub>2</sub> , SF <sub>6</sub> , CF <sub>4</sub> , NF <sub>3</sub> , C <sub>4</sub> F <sub>8</sub>
Nitride Etch, Oxide Etch	CF <sub>4</sub> , CHF <sub>3</sub> , C <sub>2</sub> F <sub>6</sub> , C <sub>3</sub> F <sub>8</sub> , C <sub>4</sub> F <sub>8</sub> , CH <sub>2</sub> F <sub>2</sub> , NF <sub>3</sub> , SF <sub>6</sub> , O <sub>2</sub>
Tungsten Etchback	SF <sub>6</sub>
<b>Ion Implantation</b>	
High, Medium, Low	AsH <sub>3</sub> , PH <sub>3</sub> , BF <sub>3</sub> , P, As, Sb, Sb(CH <sub>3</sub> ) <sub>3</sub> , GeH <sub>4</sub> , GeF <sub>4</sub> , TMGa, Ga <sub>3</sub>
<b>ALD, LPCVD, PECVD, HDP-CVD</b>	
TEOS, undoped	TEOS, O <sub>2</sub> , O <sub>3</sub>
BPSG	TEOS, O <sub>3</sub> , TMP, TMB, SiH <sub>4</sub> , PH <sub>3</sub> , B <sub>2</sub> H <sub>6</sub>
Poly-Si (doped)	SiH <sub>4</sub> , (AsH <sub>3</sub> , PH <sub>3</sub> )
Silicon Germanium	SiH <sub>4</sub> , GeH <sub>4</sub>
Oxide	SiH <sub>4</sub> , O <sub>2</sub>
Nitride, (doped)	SiH <sub>4</sub> , NH <sub>3</sub> , (TMP, TMB, SiH <sub>4</sub> , PH <sub>3</sub> , B <sub>2</sub> H <sub>6</sub> )
Oxynitride, (doped)	SiH <sub>4</sub> , NH <sub>3</sub> , N <sub>2</sub> O, (TMP, TMB, SiH <sub>4</sub> , PH <sub>3</sub> , B <sub>2</sub> H <sub>6</sub> )
Low-k dielectrics	1MS, 2MS, 3MS, 4MS, DMDMOS
High-k dielectrics	TMA, TEMA, TDEAH, TAETO, PET
Gate Electrodes	MPA, Ru(Etcp) <sub>2</sub> , PEMAT
Copper & Cobalt CVD	Cu(hfac)(TMVS), Cobaltocene and related metalorganics
Tungsten (Silicide)	WF <sub>6</sub> , SiH <sub>4</sub> , (DCS)
Barrier Layers	TiCl <sub>4</sub> , NH <sub>3</sub> , TDMAT, PDMATa, PDEATa, TAETO, W(CO) <sub>6</sub>
<b>Plasma Cleaning</b>	
PFC plasma	C <sub>2</sub> F <sub>6</sub> , C <sub>4</sub> F <sub>8</sub> , NF <sub>3</sub>
Remote NF3 plasma	F <sub>2</sub>
<b>Epitaxy</b>	
Silicon (doped)	DCS, TCS, SiH <sub>4</sub> , HCl, (AsH <sub>3</sub> , PH <sub>3</sub> , B <sub>2</sub> H <sub>6</sub> )
Silicon-Germanium	SiH <sub>4</sub> , GeH <sub>4</sub> , CBr <sub>4</sub> , 1MS, 2MS, 3MS, HCl
Silicon-Carbide (SiC)	SiH <sub>4</sub> , TMAI, HCl
<b>Compound Semiconductors, Optoelectronics, III-V on Si</b>	
GaAs, InP MOCVD (OMVPE)	AsH <sub>3</sub> , PH <sub>3</sub> , TMAI, TMGa, TMin, TBA, TBP, SbH <sub>3</sub> , HCl, Cl <sub>2</sub>
GaN MOCVD Chamber Clean	HCl, Cl <sub>2</sub>
MBE (MOMBE)	As, P, AsH <sub>3</sub> , PH <sub>3</sub> , SbH <sub>3</sub>
III-V Etch	Cl <sub>2</sub> , BCl <sub>3</sub> , HBr, SiF <sub>4</sub> , SF <sub>6</sub> , CH <sub>4</sub> , GaCl <sub>3</sub> , InCl <sub>3</sub> , AsH <sub>3</sub> , O <sub>2</sub>
<b>Photovoltaics</b>	
Concentrator Photovoltaics	PH <sub>3</sub> , AsH <sub>3</sub> , III-V metalorganics, SiH <sub>4</sub> , GeH <sub>4</sub>
CIGS	H <sub>2</sub> S, H <sub>2</sub> Se

Speciality process gases and liquid precursors used in wafer processing, solar and MEMS manufacturing are likely to be either pyrophoric, toxic, or corrosive.







# YOUR PARTNER

## FOR SUSTAINABLE MANUFACTURING

### Safety and the Environment...

For CS CLEAN SOLUTIONS, environmental protection is the essence of our business. Our eco-friendly CLEANSORB technology safely removes hazardous waste gases without consuming energy, water or fuel. One CLEANSORB column will typically have an absorbing lifetime of several months. During this time, several thousand liters of waste gases will be bound in a compact dry form. There are no secondary emissions to the environment in the form of waste water. All of our products are designed for lifetime serviceability and re-use.

### Best Prepared for the Future...

The process technologies and precursor materials used for chip manufacture continue to diversify against the background of a maturing, globalized industry with increased emphasis on Cost-of-Ownership. At the same time, growing environmental awareness is demanding more efficient usage of materials and a reduction in factory emissions. Proud of our reputation for innovative product design and high-quality engineering, CS CLEAN SOLUTIONS is best prepared and fully committed to solving these exciting new challenges. We look forward to serving you in the coming years ahead.



### Disclaimer

This brochure is intended as an introduction to our organization, products and services. While every effort has been made to ensure that the information given in this document is accurate, it is not a legal document nor a source of technical specifications. Responsibility cannot be accepted for any liability incurred or loss suffered as a consequence of relying on any matter published herein.

The reader should be aware that the configuration of a waste gas abatement system requires specialist consideration of the exhaust gases to be treated and the associated process conditions. CS CLEAN SOLUTIONS or one of its authorized sales and service partners will be pleased to advise you regarding the specific waste gas treatment requirements of your process.





# CONTACT US

## LOCATIONS

### HEADQUARTERS

#### Germany, Austria, Switzerland

CS CLEAN SOLUTIONS GmbH  
Fraunhoferstrasse 4  
85737 Ismaning  
Germany  
Tel: +49 89 9624000  
Fax: +49 89 962400-122  
sales@csclean.com  
www.csclean.com

### EUROPE

#### Netherlands, Belgium & Luxembourg

CS CLEAN SYSTEMS BENELUX B.V.  
Maxwellstraat 5  
1704 SG Heerhugowaard  
The Netherlands  
Tel: +31 72 5717666

#### France

OMICRON Technologies SAS  
2 Rue Denis Papin  
38320 Eybens  
France  
Tel: +33 476 992260

### Israel

SYCOM TECHNOLOGIES Ltd.  
31 Halehi St., Bnie-Brak  
51200 Ramat-Gan  
Israel  
Tel: +972 3 6764586

### Italy

H.P.T. Srl  
Via S. Simonetta 26/D  
20040 Caponago MB  
Italy  
Tel: +39 02 95742699

### Russia

SIGM PLUS Co.  
Vvedenskogo str. 3  
117342 Moscow  
Russia  
Tel: +7 495 3333325

### Scandinavia, Finland & Baltic States

FAB SUPPORT AB  
Älvsbyvägen 8  
SE-139 52 Värmdö  
Sweden  
Tel: +46 8 57162640

### Scotland

CS CLEAN SYSTEMS (UK) Ltd.  
15a Nasmyth Court  
Houstoun Industrial Estate  
Livingston EH54 5EG  
United Kingdom  
Tel: +44 1506439669

### Spain & Portugal

Abatement & Vacuum Technology S.L.  
Avda. Isabel de Farnesio, 34  
Local 13  
28660, Boadilla del Monte, Madrid  
Spain  
Tel: +34 91 8286158

### Turkey

SEMITECH YARI İLETKEN TEK  
Konutkent Mah. 3035 Cd. Suit  
Tower A Blok No: 89  
06810 Çankaya/ANKARA TÜRKİYE  
Tel: +90 (312) 999 60 15

### United Kingdom & Ireland

CS CLEAN SYSTEMS (UK) Ltd.  
Park House  
1 Davenport Road  
Coventry CV5 6QA  
United Kingdom  
Tel: +44 24 76712555

### NORTH AMERICA

CS CLEAN SOLUTIONS, Inc.  
Headquarters Location  
26 Commerce Drive  
Danbury, CT 06810  
USA  
Tel: +1 203 797-8155

### CS CLEAN SOLUTIONS, Inc.

Administrative Office  
1112 N. Main St. #330  
Manteca, CA 95336  
USA  
Tel: +1 510 651-2700

### ASIA

#### China

Shanghai Zillion Tek Electronic  
Technology Co., Ltd  
Room 1012, No. 660  
Shang Cheng Road, Pudong Area  
Shanghai 200120  
PR China  
Tel: +86 21 58216075-102

### India

AIMIL LTD  
Naimex House, A-8, Mohan  
Co-operative Industrial Estate  
Mathura Road  
New Delhi -110044  
India  
Tel: +91 11 30810200

### Malaysia

C.S. CLEAN SYSTEMS SERVICES  
Lot 757-A2, Jalan Benggang  
Off Jalan Datuk Mustapha  
93350 Kuching, Sarawak  
Malaysia  
Tel: +60 82 577748

### Singapore

CLEAN SYSTEMS (S) Pte Ltd.  
91 Defu Lane 10,  
#03-01 Swee Hin Building  
Singapore 539221  
Tel: +65 6396 0616

### Taiwan

Zillion Tek Co., Ltd.  
2F, No.17, Jia Xiang 5th. Road Zhubei  
City  
Hsin-Chu County 302  
Taiwan R.O.C  
Tel: +886 3 6576228

### AUSTRALIA

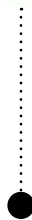
AB MANDAL Pty. Ltd.  
B3 15-21 Doody St  
NSW 2015, Alexandria, Sydney  
Australia  
Tel: +61 2 99544330

If you cannot find your country in this list, please contact our headquarters in Germany.





CS CLEAN  
SOLUTIONS



DISCOVER THE ADVANTAGES

**CS CLEAN SOLUTIONS GmbH**

Fraunhoferstrasse 4  
85737 Ismaning  
Germany

Tel: +49 89 9624000  
Fax: +49 89 962400-122

sales@csclean.com  
[www.csclean.com](http://www.csclean.com)